

Reference year 2024

ENVIRONMENTAL BULLETIN OF SKIATHOS “ALEXANDROS PAPADIAMANDIS” AIRPORT (JSI)

Contents

1. INTRODUCTION	3
1.1 Location	3
1.2 Administration	3
1.3 Environmental licensing	3
1.4 Airport Basic Data	3
1.5 Airport facilities	4
1.5.1 Fuel Handlers	4
1.5.2 Ground Handlers	4
2. TRAFFIC DATA STATISTICS	5
2.1 Annual Traffic Data	5
2.2 High season traffic data	5
2.3 Low season traffic data	5
3. AIRCRAFT NOISE	6
3.1 Noise measurements during the reference year	6
3.2 Noise levels calculation based on noise simulation software	7
4. AIR QUALITY	8
4.1 Air quality measurements during the reference year	8
4.2 Air pollutants emission and dispersion modelling	8
5. WASTE MANAGEMENT	9
6. ECOSYSTEM AROUND THE AIRPORT	10
6.1 Flora – Fauna	10
7. WILDLIFE HAZARD MANAGEMENT	11
8. CULTURAL HERITAGE	12
9. RESOURCES CONSUMPTION	13
9.1 Energy consumption	13
9.2 Fuel consumption	13
9.3 Heating oil or natural gas consumption	13
9.4 Fuel consumption for generator	13
9.5 Water consumption	13
10. GREENHOUSE GAS EMISSIONS & CARBON FOOTPRINT	14
11. HUMAN CONSUMPTION WATER MONITORING PROGRAM	15
12. RAINWATER	16
13. GROUNDWATER AND/OR SOIL AND/OR SOIL GAS MONITORING	17
14. SEWAGE TREATMENT AND DISPOSAL	18

1. INTRODUCTION

1.1 Location

The airport of Skiathos with IATA code JSI has been operating since 1972 and is located approximately 1km (north-east) from the town of Skiathos and at a very short distance of approximately 20m from the coastline of the island.

1.2 Administration

The airport administratively belongs to the Municipality of Skiathos, of the Regional Unit of Sporades, Region of Thessaly.

1.3 Environmental licensing

Approved Environmental Terms

<i>E.T. Decision Reference number</i>	68597/24.06.1999
	106193/11.07.2008
	120306/11.01.2010
	37970/22.12.2017
<i>E.T. Amendment Decision Reference Number</i>	5778/13.03.2018
	6306/20.03.2018
	116025/7666/07.11.2022
<i>Other</i>	61641/4245/06.06.2024

1.4 Airport Basic Data

<i>Airport name IATA / ICAO</i>	JSI / LGSK
<i>Airport location – Airport Reference Point (ARP)</i>	Latitude: 39° 10' 39" N Longitude: 23° 30' 13" E
<i>Altitude</i>	16.36m
<i>Number of runways</i>	1
<i>Operation hours (summer)</i>	08:00 – 23:00
<i>Operation hours (winter)</i>	Monday 10:00 – 16:00 Wednesday / Sunday 07:00 – 13:00 Friday 12:00 – 18:00 Tuesday / Thursday / Saturday CLOSED



<i>Runways</i>	<i>Length/Width</i>	<i>Code</i>
<i>Runway</i>	1,628m x 30m	02/20
<i>Full length of parallel taxiway</i>	-	
<i>Number of taxiways</i>	3	
<i>Apron capacity</i>	A B C D E	
	- - 3 1 -	



<i>Terminal</i>	
<i>Total area (m²)</i>	9.526



<i>Other buildings and service/storage areas</i>	
<i>RFF Station (m²)</i>	1.144



<i>Employees</i>	<i>High season (31.08.2024)</i>	<i>Low season (30.11.2024)</i>
<i>Fraport Greece (FG) employees</i>	30	24
<i>Employees of other companies</i>	241	126



<i>Parking Areas</i>	
<i>Car parking spaces</i>	85
<i>Bus parking spaces</i>	12
<i>Taxi parking spaces</i>	20

1.5 Airport facilities

1.5.1 Fuel Handlers

Number of fuel handler companies

<i>Number of fuel handler companies operating at the Airport</i>	1
--	---

<i>Installations inside the airport</i>	<i>EKO</i>	<i>GISSCO</i>	<i>HAFCO</i>
<i>Environmental Management System (EMS)</i>	YES	Not operating at the airport	Not operating at the airport

1.5.2 Ground Handlers

Number of ground handler companies

<i>Number of ground handler companies operating at the Airport</i>	3
--	---

<i>Installations inside the airport</i>	<i>SKYSERV</i>	<i>SWISSPORT</i>	<i>GOLDAIR</i>
<i>Environmental Management System (EMS)</i>	YES	YES	YES

2. TRAFFIC DATA STATISTICS

2.1 Annual Traffic Data

Annual Traffic Data for the year 2024



Overall Annual Air Traffic Movements¹
5.149



Annual passenger traffic
600.786



Annual cargo transferred (tn)
0

Percent of increase or decrease in relation to the previous year



-0,2%



8,7%



-67%

¹ Military and training flights not included.

Aircraft types

Prevailing aircraft types for domestic flights

Aircraft type	No. of flights
AT76	892
AT46	82
AT45	64
A320	26
EC35	12
C525	10
B06	10
B407	10
SR22	8
Other	94

Prevailing aircraft types for international flights

Aircraft type	No. of flights
B738	2.189
A320	550
A20N	418
A319	162
A321	145
E190	84
DH8D	76
A21N	64
C56X	26
C25C	22
Other	197

2.2 High season traffic data

High season traffic data (June-September)

Highest traffic month	July
Air traffic movements during the month with highest traffic	1.175
Air traffic movements daily average number during the month with highest traffic	38

2.3 Low season traffic data

Low season traffic data (October-May)

Lowest traffic month	February
Air traffic movements during the month with lowest traffic	32
Air traffic movements daily average number during the month with lowest traffic	2

3. AIRCRAFT NOISE

3.1 Noise measurements during the reference year

Noise Monitoring Stations



Have noise measurements at the airport's surrounding area been performed during the reference year? **YES**

Summary of measurement results

Noise levels are monitored according to the airport's monitoring program and new approved environmental terms.

No exceedances are recorded for year 2024.

Measurement points coordinates	Measurement points description
MP-1: 39° 11' 08" N 23° 29' 52" E	Located in Kalivia, northwest of the runway in a yard of a tavern. Affected by arrivals RWY 19 and departures RWY 01.
MP-2: 39° 10' 18" N 23° 29' 46" E	Located in Periferiakos, southeast of the runway on the parking lot of a motorcycle rental agency. Affected by departures RWY 19 and arrivals RWY 01.
MP-3: 39° 10' 01" N 23° 30' 13" E	Located in Paraliakos, southwest of the runway in the yard of a hotel. Affected by departures RWY 19 and arrivals RWY 01.
Measurement period	29.07.2024 – 30.07.2024
Noise indicators	L_{den} L_{night}

Noise complaints: 0

3.2 Noise levels calculation based on noise simulation software

Aircraft noise levels calculation based on noise simulation software

YES

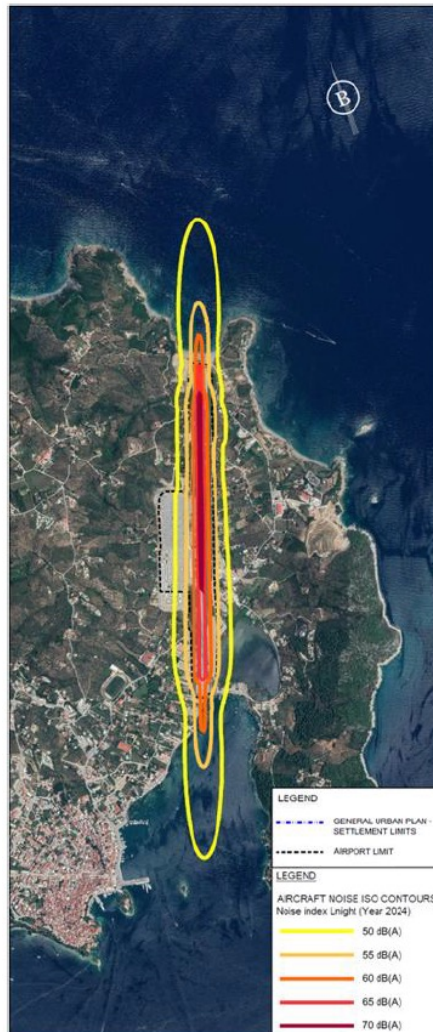
Software used

IMMI Premium 2021

Noise indicators and respective contours calculation

L_{den} L_{night}

Noise contours



Summary of results

For the year 2024 no buildings inside official settlement boundaries were found to be exposed to noise levels higher than the limits L_{den} = 70 dB(A) and L_{night} = 60 dB(A).

4. AIR QUALITY

4.1 Air quality measurements during the reference year

Have air quality measurements at the airport's surrounding area been performed during the reference year? **NO**

Summary of results

Air quality is monitored according to the airport's monitoring program, and the approved environmental terms.

For year 2024, no air quality measurements were performed.

4.2 Air pollutants emission and dispersion modelling

Calculation of air pollutants concentrations based on an emission and dispersion modelling software **NO**

Summary of results

Air quality is monitored according to the airport's monitoring program.

For year 2024, air quality modelling wasn't foreseen.

5. WASTE MANAGEMENT

<i>Waste</i>	<i>Collection</i>	<i>Management/Disposal</i>
<i>Recyclables (paper, plastic, metals, glass)</i>	<i>Separate collection by the Municipality of Skiathos</i>	<i>Disposal at material recovery facility for recycling</i>
<i>Residues (Mixed Waste) and Bulky Waste</i>	<i>Collection by the Municipality of Skiathos</i>	<i>Disposal in landfill</i>

Notes:

1. Regarding the different categories of the MSW (recyclables, mixed waste, bulky waste), the Airport Users handle their waste together with Fraport Greece B (central management).
2. Regarding the "alternative management" waste categories (Waste lubricant oil WLO, WEEE, etc.):
 - i. Waste Lubricant Oil (WLO): Collection and management by authorized collector "CYTOP S.A."
 - ii. Waste Electrical & Electronic Equipment (WEEE): Collection and management by alternative management system "Appliances Recycling S.A."
 - iii. Accumulators: Collection and management by alternative management system "Re-Battery S.A."
 - iv. Small batteries: Collection and management by alternative management system "AFIS S.A."
 - v. Used tires: Collection and management by alternative management system "ECOELASTIKA S.A."

3. The total quantities of the hazardous waste further to the above-mentioned and produced at the airport, are managed by licensed private companies which have a contract with Fraport Greece B, after a tender process according to the provisions of the legislation in force.
4. In the year 2024, Fraport Greece B in the JSI managed a total of 373,97 tons of Hazardous waste (JSI FG B 363,44 tn, third parties 10,53 tn).
5. The total quantities of the produced waste by category resulting from all activities of the airport, the collectors and final recipients, are recorded by Fraport Greece B and submitted in the Electronic Waste Registry of the Ministry for Environment and Energy via the Annual Waste Producer Report according to the provisions of the legislation in force.

6. ECOSYSTEM AROUND THE AIRPORT

6.1 Flora – Fauna



Flora

Are there protected zones of vegetation/habitats in the broader airport area?

YES

(if YES) Short description: Skiathos Airport "Alexandros Papadiamandis" is close to the Natura 2000 site:

- GR1430009 Islands of Aspronisos, Argkos, Maragkos, Repi, Tsougkria, Tsougkriaki and Sea Area of Islands Skiathos and Skopelos (Area:20,479.40ha)
- GR1430003 Skiathos: Koukounaries and Evryteri Thalassia Periochi (Area: 85.71ha)



Fauna

Are there protected species of fauna/birds in the broader airport area?

YES

(if YES) Short description: Skiathos Airport "Alexandros Papadiamandis" is near to the:

- Important Bird Area GR198 Skiathos and Skopelos islands (Area: 20.603,72 ha)
- Important Marine Mammal Area Northern Sporades (Area: 11.0623,00 ha) where *Monachus monachus* is recorded

The protected bird species (listed under Annex I of Directive 2009/147/EC) that have been observed at Skiathos broader airport area since April 2017 are presented below:

Booted eagle (*Aquila pennata*), Black-crowned night heron (*Nycticorax nycticorax*), Black winged stilt (*Himantopus himantopus*), Caspian tern (*Hydroprogne caspia*), Collared pratincole (*Glareola pratincola*), Eleonora's falcon (*Falco eleonora*), Eurasian sparrowhawk (*Accipiter nisus*), Eurasian stone-curlew (*Burhinus oedicnemus*), European kingfisher (*Alcedo atthis*), European nightjar (*Caprimulgus europaeus*), European roller (*Coracias garrulus*), European shag (*Phalacrocorax aristotelis*), Ferruginous duck (*Aythya nyroca*), Glossy ibis (*Plegadis falcinellus*), Golden plover (*Pluvialis apricaria*), Great egret (*Casmerodius albus*), Great white pelican (*Pelecanus onocrotalus*), Lesser kestrel (*Falco naumanni*), Little egret (*Egretta garzetta*), Long-legged buzzard (*Buteo rufinus*), Marsh harrier (*Circus aeruginosus*), Mediterranean gull (*Larus melanocephalus*), Merlin (*Falco columbarius*), Moustached warbler (*Acrocephalus melanopogon*), Peregrine falcon (*Falco peregrinus*), Purple heron (*Ardea purpurea*), Red-backed shrike (*Lanius collurio*), Ruff (*Philomachus pugnax*), Sandwich tern (*Sterna sandvicensis*), Short-toed snake eagle (*Circaetus gallicus*), Slender billed gull (*Chroicocephalus genei*), Squacco heron (*Ardeola ralloides*), Tawny pipit (*Anthus campestris*), Wood sandpiper (*Tringa glareola*), Yelkouan shearwater (*Puffinus yelkouan*)

7. WILDLIFE HAZARD MANAGEMENT

Wildlife strikes and wildlife hazard management measures

Wildlife species that suffered a strike	Strikes (%)
Small passerines	100%

Wildlife strike risk mitigation measures

The presence and behavior of wildlife species at Skiathos airport is monitored in regular intervals, daily, from dawn to dusk. Some of the wildlife control methods applied at Skiathos airport are distress calls (bioacoustics), digital sounds, anti-bird laser, etc. Preventive long-term actions that are mainly related to habitat management measures (e.g. grass cutting, water body management, ground levelling) are also taken to further reduce the presence of hazardous wildlife species constituting a risk to flight safety. In addition, a NOTAM is published and regularly updated.

8. CULTURAL HERITAGE

Have new cultural heritage properties been discovered during the reporting period?

NO

9. RESOURCES CONSUMPTION



9.1 Energy consumption

Energy consumption (monthly electric energy consumption, in Kwh)

Total annual electric energy consumption (in Kwh)	1.552.525,70*
---	---------------

*Third parties' consumption is excluded.



9.4 Fuel consumption for generator

Fuel consumption

Total annual consumption (lt)	993,00
-------------------------------	--------



9.5 Water consumption

Water consumption

Total annual consumption (m ³)	8.263,00*
--	-----------

*January data are not available.



9.2 Fuel consumption

Fuel consumption

Number of FG vehicles at the airport	13	
Total annual fuel consumption	Diesel (lt)	8.452,60
	Unleaded gasoline (lt)	2.741,67



9.3 Heating oil or natural gas consumption

Heating oil or natural gas consumption

Total annual heating oil consumption (lt)	-*
Total annual heating natural gas consumption (m ³)	N/A

*Heating and air conditioning is performed via heat pumps.

10. GREENHOUSE GAS EMISSIONS & CARBON FOOTPRINT

Greenhouse gas emissions that were included in the carbon footprint calculation are the CO₂, CH₄ & N₂O emissions included in scope 1 & 2 of the GHG protocol:

- Scope 1: Direct GHG emissions that occur from sources that are owned and/or controlled by the airport,
- Scope 2: Indirect GHG emissions from the generation of purchased electricity, steam, heat or cooling consumed by the airport.

Source Flows	Total CO ₂ e Emissions (t) 2024	
	Location based	Market based
Direct emissions from heating fuel (scope 1)	0,0	0,0
Direct emissions from fuel used for fleet vehicles (scope 1)	29,1	29,1
Direct emissions from fuel from refrigerants (scope 1)	3,8	3,8
Direct emissions from fuel used for generators (scope 1)	0,0	0,0
Indirect emissions from electricity consumption (scope 2)	777,2	567,8
Total (t)	810,1	600,7
Kg CO₂e /passenger	1,35	1,00

Notes

Fraport Greece B is committed to the monitoring, management and reduction of its airports carbon footprint.

In order for this target to be achieved:

- Direct and indirect carbon emissions from all the emission sources in the airports' boundaries are calculated and reported, based on the GHG Protocol (scope 1 & 2)
- The airport is certified according to ACA (Airport Carbon Accreditation), Level-1.

11. HUMAN CONSUMPTION WATER MONITORING PROGRAM

Human consumption water quality

<i>Water supply (public water network or airport's boreholes)</i>	<i>Airport borehole</i>
<i>Is sampling of the airport's water network performed?</i>	<i>YES</i>
<i>(if YES) Sampling frequency</i>	<i>Quarterly</i>

* During summer, there is also a supply from a private tank.

Summary of results

The results of the microbiological and chemical analyses show that the parameters analyzed as regards the water network of Terminals T1 & T2 are within the legislative limits defined by the Ministerial Decision Δ1(δ)/ΓΠ οικ. 27829/2023 (GG 3525/B` 25.5.2023) regarding the quality of human consumption water. Occasionally, the water showed exceedances in Ferrum, making it unsuitable for human consumption. The phenomenon is being monitored and under investigation. Airport users were informed and during the periods when there is an issue, information signs are posted.

12. RAINWATER

RAINWATER (collection, treatment disposal and recipient)

Area	Collection/treatment/disposal	[YES/ NO]
Apron and manoeuvring area	Collected in drainage ditches leading to the sea	YES
Other runoffs (runway etc.)	Collected in drainage ditches leading to the sea	YES
Treatment of rainwater by oil-separator		YES

Rainwater quality

Is sampling of the airport's rainwater performed?	YES
(if YES) Sampling frequency	Yearly
Parameters analyzed: pH, conductivity, TSS, DO, NO ₃ , NO ₂ , Oil & grease, BOD, COD, Total Petroleum Hydrocarbons (TPH), PAHs, BTEX, Heavy metals, Detergents	

Summary of results

Surface rainwater quality is monitored according to the airport's monitoring program. Due to the absence of designated recipients and relevant national quality limits for surface rainwater, the Environmental Health & Safety Guidelines of the International Finance Corporation (IFC) are adopted. Surface rainwater monitoring for 2024, was performed and the quality of the water is in accordance with the IFC guidelines. However, the presence of hydrocarbons (C₁₀-C₄₀) (mg/lt) is recorded, and the monitoring of the phenomenon will continue.

13. GROUNDWATER AND/OR SOIL AND/OR SOIL GAS MONITORING

Groundwater and/or soil and/or soil gas quality

Is sampling of the airport's groundwater and/or soil and/or soil gas performed?	YES
(if YES) Sampling frequency	Yearly
Parameters analyzed: TPH, BTEX, MTBE, pH, conductivity, TSS, DO, NO ₃ , NO ₂ , oil and grease, BOD, COD, PAHs, heavy metals (As, Pb, Cd, Cr, Ni, Hg, Al), chlorine ions, sulphate ions	

Summary of results

Groundwater monitoring within airport boundary - Fraport Greece

The results of the analyses of the airport's borehole do not record exceedances in petroleum products, but it shows a very high zinc (Zn) value, hence the monitoring of the phenomenon will continue. As the borehole is also used for water supply, users have been informed, and water is not used.

Groundwater and/or soil and/or soil gas monitoring at fuel farms – Fuel Handlers

According to the approved environmental terms, monitoring of groundwater was performed by EKO (2024). The results are satisfactory with no exceedances present.

14. SEWAGE TREATMENT AND DISPOSAL

Sewage

Sewage network to the municipal wastewater treatment plant (WWTP)	YES
Autonomous airport's wastewater treatment plant (WWTP)	NO

Blue water

Collection and disposal: Collection in watertight tank and disposal to the municipal sewage network.

Waste water treatment plant description (where applicable)
Description of characteristics and condition of the airport's WWTP including possible problems. Type and frequency of the effluent quality measurements

Degree of treatment of airport's WWTP	N/A
Treatment method	N/A
Disposal of treated wastewater	N/A
Sludge disposal	N/A
Sampling frequency of WWTP effluent	N/A
Parameters analyzed	N/A
Summary of quality of WWTP effluent	N/A

Contact

environmental@fraport-greece.com